



The Tanyptera Project



www.northwestinvertebrates.org.uk



The Tanyptera Project / North West Invertebrates



@tanyptera



@tanyptera_project

North West Invertebrates Monthly Notes - August 2021

A selection of notable records brought to the attention of Tanyptera Project staff via email, social media etc. or submitted to iRecord. These records should be submitted, if not already, to relevant data collators. [iRecord](#) is recommended. Listed alphabetically by order, family and species. Some records received late may be included next month. All images are under copyright from the original recorder unless stated.

Newly recognised vice county / modern county records

Brachyopa bicolor (Syrphidae), Greenfield, Saddleworth, VC63, 28/5/2021, K. Gartside (image right).

- New to Greater Manchester. A Nationally Scarce saproxylic hoverfly expanding range northward in recent years.
- Usually found in old woodland or parkland where the larvae live in sap runs.



Psacadina zernyi (Sciomyzidae), Ashton's Flash, VC58, 13/7/2021, N. Jones.

- New to Cheshire and the region. A single adult male found.
- A scarce UK species, associated with mineral rich marshes. Larvae feed on aquatic snails.

Macrosteles ossiannilssonii (Cicadellidae), Elton (Goyt), VC59, Prov. date 01/11/2020 D. Bentley.

- New to Greater Manchester, and according to the Auchenorrhyncha Recording Scheme, there is only one other hectad for this species in VC59, on the Sefton Coast.
- Adults and larvae feed freely on *Rhynchospora* (beak-sedges).

Lasius platythorax (Formicidae), Wybunbury Moss, VC58, 22/4/2021, A. Lidgett (image right = CC-BY)

- New to VC58 and Cheshire. Appears to be widespread in the UK but confusion with *L. niger* until 1991 has meant under-recording.
- Prefers damper conditions to *L. niger*, and usually found away from parks and gardens.



Mordellistena neuwaldeggiana (Mordellidae), Tatton Park, VC58, 7/7-30/7/2021 (trap date duration), G. Hedges, Det. C. Washington.

- Probably new to Cheshire and the region. A scarce flower beetle found in woodlands.
- In vane trap as part of Tanyptera saproxylic invertebrate survey.

Hornet Rove Beetle, *Velleius dilatatus* (Staphylinidae), Dunham Park, VC58, 8/7-30/7/2021 (trap date duration), G. Hedges, Det. C. Washington.

- Probably new to Cheshire and the region. Expanded out of ancient woodland in Southern England in recent decades, in similarity to it's host, European Hornet *Vespa crabro*.

- Adults spend most of their time in *V. crabro* nests, emerging after dark in warm conditions to feed on other insects and at sap runs.

iRecord summary August 2021 (3rd Sept download)*

*Excluding Lepidoptera

- 1141 (-64) records / 424 (+56) species
- Most recorded order: Diptera (411 records) – also top in June & July
- Most recorded family: Syrphidae (302) – also top May - July
- Top 5 most recorded species:
 1. Common Darter *Sympetrum striolatum* (38) – new entry
 2. Marmalade Hoverfly *Episyrphus balteatus* (28) – also 2nd in July
= Common Carder Bumblebee *Bombus pascuorum* (28) – new entry
 4. 7-spot Ladybird *Coccinella septempunctat* (23) – new entry
= Green Shieldbug *Palomena prasina* (23) – new entry

iRecord - Records and species numbers by taxon group

Group	No. of records	No. of species
insect - true fly (Diptera)	411	107
insect - hymenopteran	194	70
insect - beetle (Coleoptera)	165	82
insect - dragonfly (Odonata)	129	16
insect - true bug (Hemiptera)	108	34
insect - orthopteran	37	8
insect - caddis fly (Trichoptera)	20	6
acarine (Acari)	19	12
spider (Araneae)	18	7
mollusc	16	9
crustacean	8	6
harvestman (Opiliones)	8	5
insect - booklouse (Psocoptera)	5	2
millipede	2	2
insect - lacewing (Neuroptera)	1	0

Notable Records

Annelid

-

Acari (Mites and Ticks)

-

Araneae (Spiders)

-

Chilopoda (Centipedes)

-

Collembola (Springtails)

-

Coleoptera (Beetles)

Wasp Nest Beetle, *Metoecus paradoxus* (Rhipiphoridae), Cuerden, VC59, 1/8 & 3/8, A. Billington (image right).

- Rarely recorded in the region but perhaps increasing. There are no records for VC59 on NBN Atlas, and only two others on iRecord.
- Parasitises social wasp nests.
- See blog article on NW Inverts website by S. Garland for details of a 2020 VC60 record: [Beetles for Hymenopterists](#)



Helochares punctatus (Hydrophilidae), Spen Moor, Bury, VC59, 10/08, D. Bentley (image right).

- Nationally Notable B scavenger beetle of acid pools and wet grass rafts.
- An adult female found in Higher Spen Moor ponds.



Colydium elongatum (Zopheridae), Tatton Park, VC58, 4/8, G. Hedges & T. Hunter (Image right Pierre Bornand - from Flickr: CC BY-NC 2.0)

- New to NW England. Associated with bark beetles in ancient broad-leaved woodland and pasture woodland.
- Nationally Scarce. Very local in South England according to Duff (2020). The closest record on NBN Atlas is in North Huntingdonshire. This record may therefore represent a significant expansion in known UK distribution.



Datonychus melanostictus (Curculionidae), Chester Zoo Nature Reserve, VC58, 25/8, G. Hedges.

- No Cheshire records since 1994, and very few from NW England.
- This weevil was vacuumed from one of its foodplants, Water Mint (*Mentha aquatica*), a lawn of which was growing beside a ditch during a Tanyptera Recording Day.

Trichosirocalus thalhammeri (Curculionidae), Barnaby's Sands, VC60, 11/8, G. Hedges.

- New to VC60 according to the regional checklist (Washington, 2020).
- A weevil often found in Saltmarsh, as in this occurrence.
- Vacuumed during a Tanyptera Recording Day.

Protapion dissforme (Apionidae), Barnaby's Sands, VC60, 11/8, G. Hedges. (Image right Mark Gurney - CC BY-NC-SA 2.0).

- New to VC60 according to the regional checklist (Washington, 2020).
- Associated with clovers in damp grassland.
- Vacuumed during a Tanyptera Recording Day.

Synapion ebeninum (Apionidae), Chester Zoo Nature Reserve, VC58, 25/8, G. Hedges.

- 2nd Cheshire record after James Murray found the species at Helsby in 1909 with voucher material residing in Tullie House Museum, Carlisle.
- A few individuals vacuumed during a Tanyptera Recording Day.



- Associated with various herbaceous Fabaceae.

Astenus pulchellus (Staphylinidae), New Ferry Butterfly Park, VC58, 13/8, C. Washington.

- Probably new to Cheshire and the region.
- Found around an ant nest heap.
- Found during a Tanyptera Recording Day

Myrmecocephalus concinnus (Staphylinidae), New Ferry Butterfly Park, VC58, 13/8, C. Washington.

- Probably new to Cheshire. Just 22 records on NBN Atlas, and perhaps only one previous record for the region from VC60 (D.R. Nash article in *The Coleopterist*).
- Found around an ant nest heap.
- Found during a Tanyptera Recording Day

Lesser Stag Beetle, *Dorcus parallelipedus* (Lucanidae), Dunham Massey, VC58, 12/8, G. Hedges, C. Washington, T. Hunter, N. Pownall.

- Several found on rotten logs at night as part of a Tanyptera Project survey of deadwood invertebrates.
- Widespread across much of England but apparently very local in the NW.

Diplopoda (Millipedes)

-

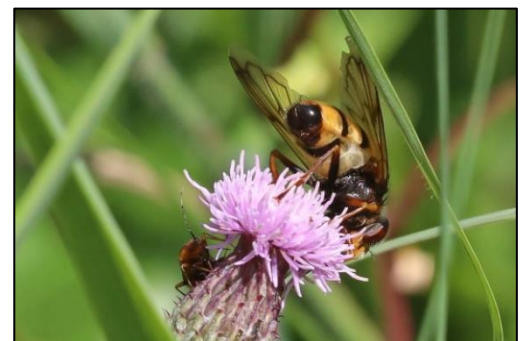
Diptera (True Flies)

Volucella inanis (Syrphidae)

- No Wirral records on NBN Atlas but four on iRecord, including three from 2021:

RSPB Burton Mere, VC58, 12/8, J. Rogers
 New Ferry Butterfly Park, VC58, 13/8, R. Lowry (image CC-BY)
 Port Sunlight River Park, VC58, 31/8, L. Dixon

- Steadily expanding its range Northwards, and first detected in Cheshire in 2011. Over 50% of iRecord records for the region are from Merseyside, including many from the Sefton Coast.
- A parasite of social wasps, including Hornets.



Chrysotoxum verralli (Syrphidae), Mossley, VC58, 12/8, K. Gartside. (image right).

- Apparently scarce in Cheshire with just 8 previous VC58 records according to the regional checklist (Rostron, 2020).
- Most often found on open grassland or heathy rides. The larvae are thought to be associated with ant-attended aphids.



Syntormon pseudospicatum (Dolichopodidae), Barnaby's Sands, VC60, 11/8, P. Brighton.

- New to Lancashire and the region although has been recorded in a Cumbrian area of Morecambe Bay.
- Found in numbers on the Saltmarsh during Tanyptera Recording Day.

Xanthocanace ranula (Canacidae), Arm Hill, Barnaby's Sands, VC60, 11/8, P. Brighton.

- Probably new to Lancashire and the region. No previous records on NBN Atlas.
- A specialist of rocky shores.
- Found during Tanyptera Recording Day.

Ephemeroptera (Mayflies)

Hemiptera (True Bugs)

Aphrophora major (Aphrophoridae), Chester Zoo Nature Reserve, VC58, 25/8, T. Hunter.

- Two adults swept in a wet meadow during a Tanyptera Recording Day. Probably only the 2nd VC58 record after T. Hunter found two adults females at Swettenham Meadows during a Tanyptera Recording Day in 2018.
- A large Nationally Notable B froghopper associated with *Alnus*, *Betula* and *Salix*. Most UK records are from Southern England.

Heath Assassin Bug, *Coranus subapterus* (Reduviidae), Freshfield Dune Heath, VC59, 28/8, P. Kinsella (image right)

- Well known from the Freshfield Dune Heath and the Sefton Coast but no records for 5 years.
- Found locally throughout Britain in dry sandy locations such as heathland and coastal dunes.



Orthotylus moncreaffi (Miridae), Barnaby's Sands, VC60, 11/8, P. Brighton.

- New to Lancashire and the region according to both the regional checklist (Judd 2011) and Rob Ryan's more recent National Heteroptera Atlas of published records.
- Associated with Sea Purslane *Atriplex portulacoides* and related plants growing in salt marshes.
- Found during Tanyptera Recording Day.

Hymenoptera (Bees, Wasps, Ants, Sawflies)

Haltichella rufipes (Chalcididae), Chester Zoo Estate, VC58, 25/8, Rec. G. Hedges, Det. T. Hunter.

- Probably new to Cheshire. Just 9 UK records on NBN Atlas but a particularly under-recorded group, which is not covered by a National Recording Scheme.
- An adult female beaten from vegetation during Tanyptera Recording Day. This group of parasites have characteristically swollen femora.

Brachymeria tibialis (Chalcididae)

Ashton's Flash, VC58, 12/8, N. Jones (image right)
New Ferry Butterfly Park, VC58, 13/8, E. Brighton, Det. T. Hunter.

- Probably new to Cheshire. Only added to the British list is 2008. A parasitoid of Burnet Moth pupae.
- Found during a Tanyptera Recording Day and commissioned survey respectively.



Nomada fucata (Apidae), Thurstaston, Dee Estuary, VC58, 3/8, A Goodwin (image right).

- Only one previous VC58 record showing on RECORD database from 2019, nothing on NBN Atlas or previously on iRecord.
- Adult female seen investigating nest holes of its host species, *Andrena flavipes*, on a south-facing soft-rock cliff face.



Isopoda (Woodlice and their relatives)

Porcellionides pruinosus (Porcellionidae), Slyne, VC60, 27/8, N. Garnham (image right - CCO).

- Possibly new to VC60. No records on NBN Atlas, and this is the first NW record on iRecord. According to Felton's 1999 Lancashire and Cheshire checklist, there was a pre-1930 record for Lancs but no VC details are given.
- A cosmopolitan species, which is also widely distributed in the UK, but under-recorded in many areas.



Odonata (Dragonflies & Damselflies)

Southern Migrant Hawker, *Aeshna affinis* (Aeshnidae), Hilbre Island, VC58, 25/8 & 26/8, C. Williams.

- 1st verified VC58 record at Hilbre Bird Observatory. May have been more than one individual. See image at <https://cheshiredragonflies.wordpress.com/sighting-updates/>
- A migrant species seen with increasing frequency in the UK. Within the region, has been recorded from the Lancashire coast.

Orthoptera (Grasshoppers and Crickets)

Roesel's Bush-cricket, *Roeseliana roeselii* (Tettigoniidae)

Middlewich, VC58, 12/8, A. Goodwin.

- Possibly a 2nd Cheshire record having been recorded by D. Higginson-Tranter at Marbury Park in July 2021 (see July notes). There are no other records on RECORD, iRecord, or NBN Atlas.

Dofferfold, Bury, VC59, 11/8, J. Holt.

Dofferfold, Bury, VC59, 12/8, D. Bentley. (image right CCO)

- Both records above are located within the same field. There are now at least four known sites in VC59 for this species, having first been detected in 2019.



Plecoptera (Stoneflies)

-

Lepidoptera (Butterflies & Moths)

Moths are reported upon for VC59&60 biannually and VC58 annually via Lancashire moth group and Cheshire moth group respectively. Butterfly records are summarised annually by local branches of Butterfly Conservation. This summary will therefore only share observations reported to Tanyptera staff or posted on the North West invertebrates Facebook group.

Cypress Pug, *Eupithecia phoeniceata* (Geometridae), Moulton, Northwich, 29/8, P. Brewster.

- A single adult caught in a garden moth trap.
- Possibly the 3rd Cheshire record, having first been reported at a house light in Elton by S. Holmes in 2019, which represented a jump in known distribution from Warwickshire.

Mollusca (Slugs and Snails)

-

Neuroptera (Lacewings)

-

Opiliones (Harvestmen)

Leiobunum sp. A (Sclerosomatidae), St Helens, VC59, 20/8, S. Marley.

- A large, unnamed harvestmen first recorded in Britain in 2009, often found in roosting aggregations on buildings. This record of aggregations is from St Helens Cemetery, and there have now been a few Lancashire records.
- Despite the lack of a species name, records can be submitted to iRecord as 'Leiobunum sp. A'.



Raphidioptera (Snakeflies)

-

Trichoptera (Caddisflies)

-